

Registered Unemployment November 2010

Statistics Unit: www.gov.je/statistics



Introduction

Data on people registered as unemployed and actively seeking work in Jersey is compiled and administered by the Social Security Department. Since January 2010 the Statistics Unit has independently analysed this anonymised data and publishes a monthly report.

When interpreting the numbers presented in this report, it should be kept in mind that there is no legal requirement for all unemployed residents of Jersey to register as actively seeking work (ASW) with the Social Security Department. The numbers shown, therefore, constitute an informative set of indicators of the level and characteristics of unemployment in the Island at the specified point in time.

Furthermore, when placing the figures contained in this report in a historical context, it should be recognised that there have been significant changes regarding the definition and criteria relating to registered unemployment in Jersey in recent years. In particular, the introduction of Income Support in 2008 has led to a much higher proportion of individuals actively seeking work being included in the registered unemployment figures.

The internationally comparable unemployment rate (as defined by the International Labour Organisation, ILO) is measured on an annual basis by the Jersey Annual Social Survey. In the summer of 2010 the ILO unemployment rate for Jersey was measured to be 3.0%. This rate corresponds to 1,700 people being unemployed at that point in time.

The numbers of people registered as unemployed and actively seeking work include people who are on the Advance to Work, Advance Plus¹ and Workwise schemes².

Summary

On 30th November 2010:

- **the total number³ of people registered as unemployed and actively seeking work (ASW) in Jersey was 1,310;**
- the latest monthly ASW total is:
 - 20 higher than that of a month earlier, October 2010;
 - 220 higher than that of a year earlier, November 2009;
- about a quarter of the ASW total (350 people) were teenagers aged 16-19 years; 140 teenagers were on the Advance to Work Scheme¹;
- on a **seasonally adjusted basis**, the total number of people registered as ASW has been at a **similar level for the last four months** (August – November 2010) but some 150 higher than that seen during the first six months of 2010.

¹ The Advance to Work scheme provides 16 to 19 year olds who have left school or college with a relevant work placement and training. Advance Plus provides over 19 year olds with a relevant work placement and training.

² Workwise comprises a team of advisors in the Social Security Department who help people with special employment needs, or having particular employment barriers, to prepare for and seek suitable work. From October 2010, a system enabling more complete counting of individuals on Workwise placements has been implemented.

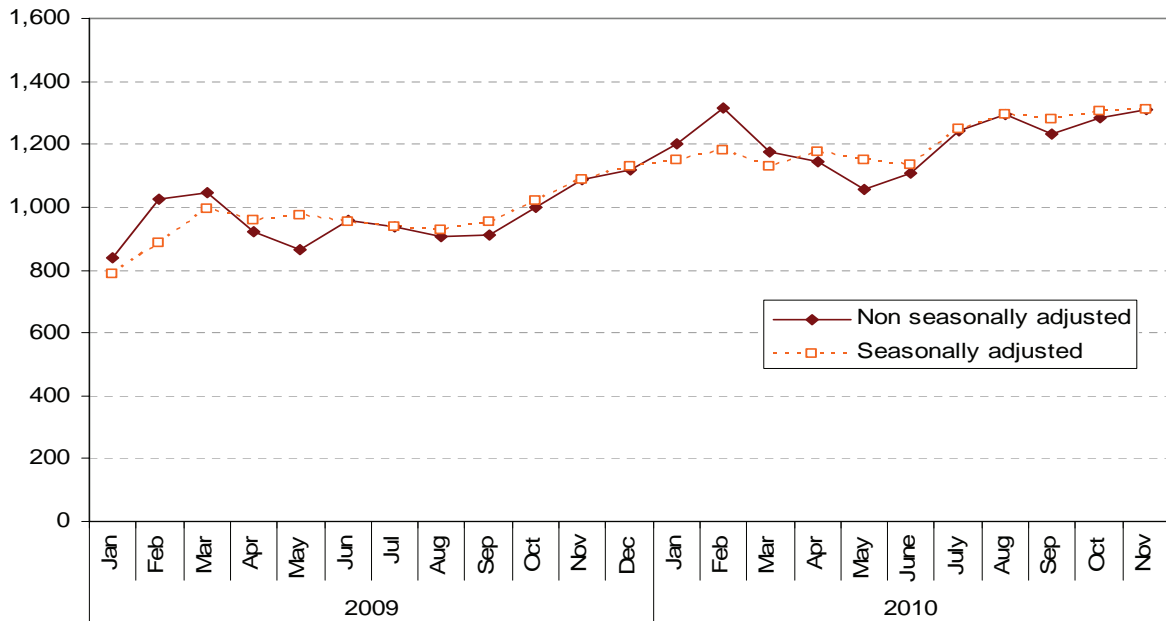
³ Numbers presented in this report are rounded to the nearest 10.

Registered Unemployed people Actively Seeking Work

On 30th November 2010, 1,310 people were registered with the Social Security Department as unemployed and actively seeking work (ASW). Almost two-thirds (61%) of people registered as ASW on this date (800 individuals) were receiving Income Support⁴.

Figure 1 shows the total number of people registered as ASW at the end of each month since January 2009 (monthly data are also shown in Annex Table A1). From May 2010 to August 2010 there was an ongoing monthly increase in the number of people registered as ASW. The number registered in November 2010 is 20 higher than in the previous month and 220 higher than a year earlier, in November 2009.

Figure 1– Total number of individuals registered as ASW, Jan 2009 – Nov 2010



The seasonally adjusted series of the total registered as ASW, in which seasonal and calendar effects are removed, is also shown on Figure 1. From this perspective, the number of people registered as ASW in Jersey in November 2010 was at a similar level to the previous three months (August-October 2010) but some 150 higher than that seen during the first six months of 2010.

Registered ASW by age

On 30th November 2010, more than two-fifths (42%) of all people registered as ASW in Jersey were under the age of 25, with about a quarter of the total (26%) being teenagers aged 16-19 years.

Figure 2 shows the numbers registered as ASW by age of individuals for the last four months, from August to November 2010.

⁴ The total number of adults receiving Income Support without work will be greater than this figure, which represents the number registered on 30th November 2010 as ASW.

Figure 2 – Individuals registered as ASW by age, Aug – Nov 2010

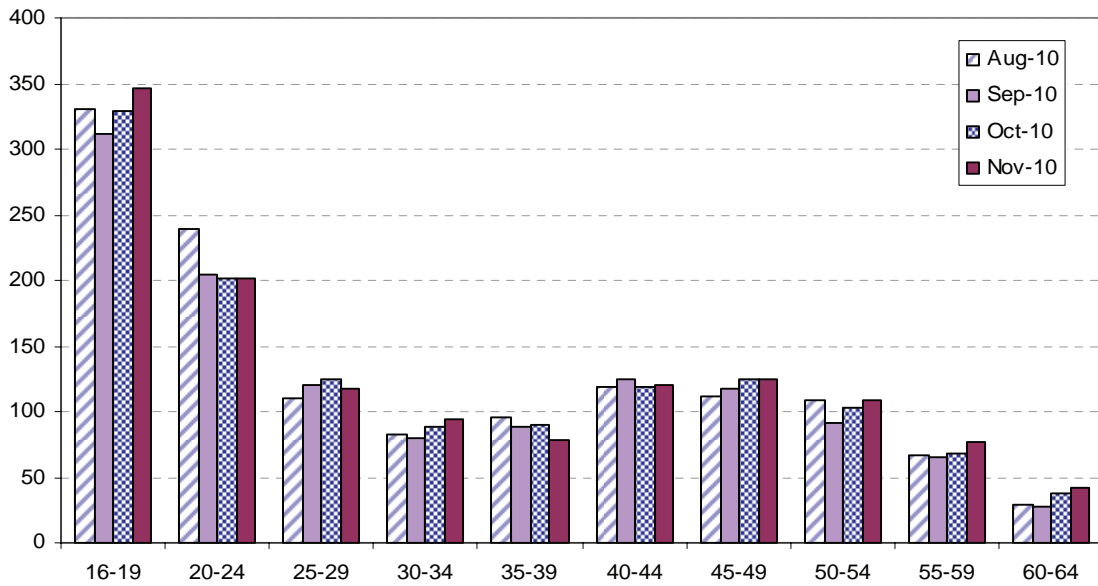
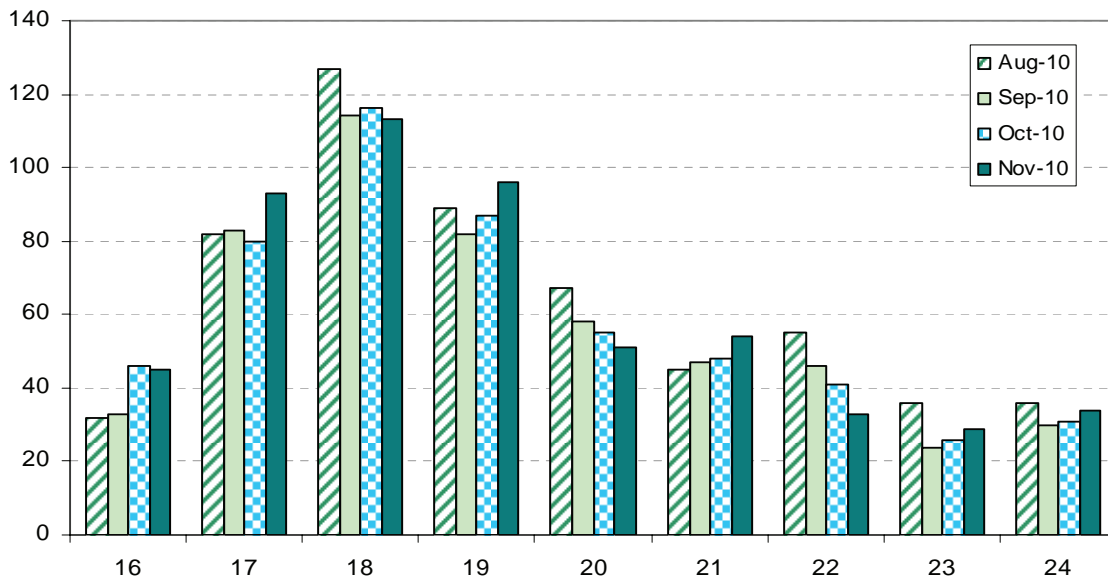


Figure 3 shows the age distribution for people under 25 years of age who were registered as ASW from August to November 2010.

Of the 350 teenagers who were registered as ASW at the end of November 2010, 140 were on the Advance to Work scheme.

Figure 3 – Individuals under the age of 25 registered as ASW, Aug – Nov 2010



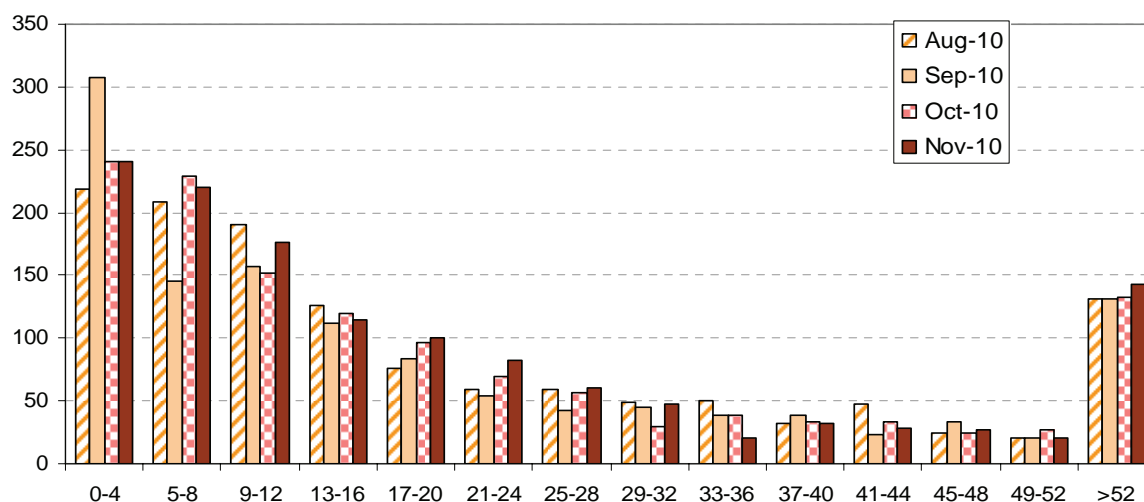
Registered ASW by gender

Two-thirds (66%) of people registered as ASW on 30th November 2010 were men (870 individuals), a slightly greater proportion than seen in recent months.

Duration as ASW

Almost half (49%) of all people registered as ASW on 30th November 2010 had been registered for fewer than 13 weeks (approximately 3 months). Approximately 11% of the total (140 individuals) had been registered as ASW for more than a year - see Figure 4.

Figure 4 – Registered ASW by length of period registered (weeks), Aug - Nov 2010



Occupation and Industry

Individuals working in some occupations and industries of the economy, notably in the Finance sector, often seek employment through private agencies instead of registering with the Social Security Department. Such occupations and industries will, therefore, be under-represented in the ASW numbers. Nevertheless, the change over time for all recorded occupations and industries will be informative.

Occupation

Table 1 – Recorded occupation of last employment of individuals registered as ASW

Occupation ⁵	Aug 2010	Sep 2010	Oct 2010	Nov 2010
Managers and Senior Officials	5%	7%	6%	5%
Professional	3%	2%	2%	3%
Associate Professional and Technical	7%	8%	8%	7%
Administrative and Secretarial	12%	14%	13%	13%
Skilled Trades	19%	18%	17%	16%
Personal Service	6%	6%	6%	6%
Sales and Customer Service	14%	12%	13%	12%
Process, Plant and Machine Operatives	3%	3%	3%	4%
Elementary Occupations	32%	31%	32%	33%

As Table 1 shows, a third of people registered as ASW on 30th November 2010 had worked in the category of “Elementary occupations”, and about a sixth in “Skilled Trades” (see Notes for example occupations within the different categories).

⁵ Standard Occupational Classification SOC2000.

Industry

The totals for each reported industry have been aggregated into groups of similar industries in Table 2.

Table 2 – Recorded industry of last employer of individuals registered as ASW, Percentage of all reported industries

Industry	Aug 2010	Sep 2010	Oct 2010	Nov 2010
Banking, Miscellaneous Insurance, Finance and business	17%	16%	16%	16%
Miscellaneous professional and domestic services	19%	19%	18%	17%
Wholesale and Retail, Motor repairs and sales	15%	15%	15%	15%
Construction and allied trades, Mining and quarrying	18%	18%	17%	16%
Public Administration, including States Trading Committees	8%	8%	8%	7%
Hotels, restaurants, pubs and clubs	7%	8%	9%	12%
Educational establishments and Medical services	5%	5%	5%	6%
Transport and Communications	4%	4%	5%	4%
Manufacturing and Engineering	4%	3%	4%	4%
Agriculture, Fishing and Horticulture	3%	2%	3%	3%

*Statistics Unit
23rd December 2010*

Notes

Standard Occupational Classification (SOC 2000):

Example occupations within each category:

Managers and Senior Officials

managers and senior offices in public and private sectors.

Professional

science professionals, civil engineers, pharmacists, veterinarians, teachers, lawyers, judges, chartered accountants, architects, social workers, librarians, clergy.

Associate Professional and Technical

science technicians, engineering technicians, nurses, dental technicians, physiotherapists, youth workers, police officers (sergeant and below), artists, actors, graphic designers, journalists, sport coaches, air traffic controllers.

Administrative and Secretarial

office clerks, secretaries, personal assistants, receptionists, book-keepers, telephonists.

Skilled Trades

farmers, gardeners, fishermen, mechanics, electricians, telecommunication engineer, computer engineer, bricklayers, plumbers, carpenters, plasterers, tailors, printers, butchers, bakers, chefs.

Personal Service

nursing auxiliaries and assistants, care assistants, home carers, animal care, leisure and travel assistants, travel agents, hairdressers, nursery nurses, childminders, education assistants, housekeepers.

Sales and Customer Service

sales assistants, retail cashiers, call centre agents, check out operators, customer care occupations, telephone sales person.

Process, Plant and Machine Operatives

plant and machine operatives, fork-lift truck drivers, taxi cab drivers, chauffeurs, bus drivers, van drivers, construction operatives.

Elementary Occupations

farm workers, labourer, packers, postal workers, messengers, couriers, hotel porters, kitchen and catering assistants, waiters, bar staff, domestic cleaners, security guards.

Annex

Table A1: Number of individuals registered as ASW, Jan 2009 – Oct 2010⁶

		Male	Female	Total	Seasonally adjusted total
2009	Jan	570	270	840	790
	Feb	700	320	1,020	890
	Mar	720	330	1,050	1,000
	Apr	620	300	920	960
	May	560	300	870	970
	Jun	630	330	960	950
	Jul	620	320	940	940
	Aug	580	320	910	930
	Sep	580	330	910	960
	Oct	650	350	1,000	1,020
	Nov	700	390	1,090	1,090
	Dec	700	420	1,120	1,130
2010	Jan	770	440	1,200	1,150
	Feb	810	510	1,320	1,180
	Mar	720	450	1,170	1,130
	Apr	710	430	1,140	1,180
	May	670	390	1,060	1,150
	Jun	690	420	1,110	1,130
	Jul	760	490	1,240	1,250
	Aug	810	490	1,290	1,300
	Sep	770	460	1,230	1,280
	Oct	840	450	1,290	1,300
	Nov	870	440	1,310	1,310

⁶ Numbers are rounded independently to the nearest 10; hence components may not sum to totals.